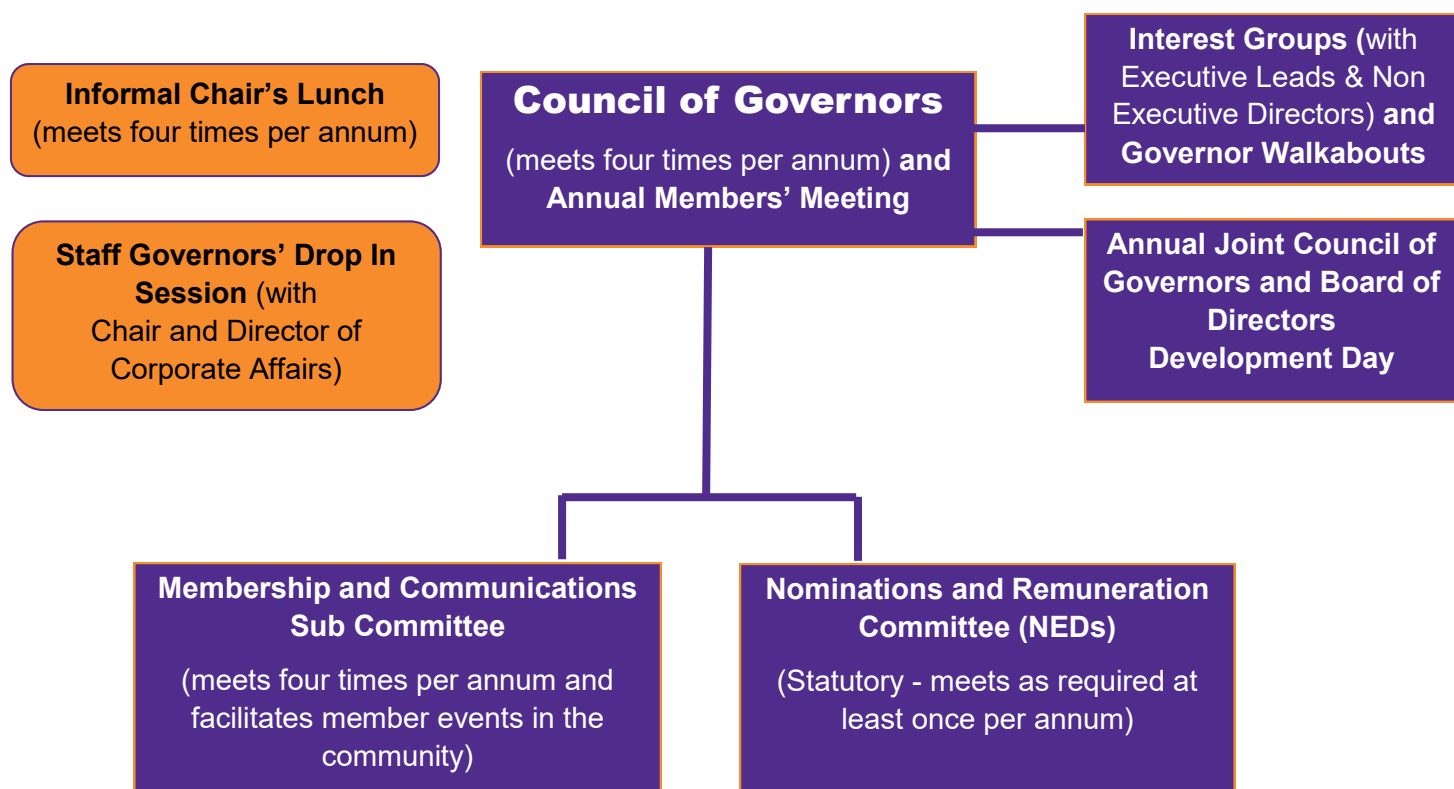


Item 10.2a

‘Our journey to be the **‘best’** - how the Council of Governors support LHCH to achieve this vision.’



By taking on the role of ‘critical friend’, and advocating for patients, families and staff, the Council of Governors at Liverpool Heart and Chest Hospital plays an important role supporting the Trust as it aims to maintain its ‘*Outstanding*’ CQC rating.

The Council of Governors at LHCH has established a robust infrastructure (illustrated above) that ensures it is able to hold effectively Non Executive Directors to account for the performance of the Trust. In addition to this, Governors participate in a wider range of meetings and events e.g. observation of Board of Director meetings, Patient & Family Listening events and PLACE assessment to name but a few.

www.lhch.nhs.uk

@LHCHFT



<https://www.facebook.com/lhchft/>

